



 ASI 30

**Modular Helium Leak Detector.  
Extended Capabilities for Industrial Leak Detection Systems.**

## Modular Helium Leak Detector. Extended Capabilities for Industrial Leak Detection Systems.

### Flexible and versatile

With the ASI 30, we have developed the perfect helium leak detection solution dedicated to any industrial leak detection system working in daily operation. This unit offers high performance, reliability, repeatability, with minimum maintenance and maximum up-time.

Thanks to its modular design the ASI 30 is optimized for minimum space requirements and maximum integration options. The vacuum module can be installed in any position and all the other modules are compatible with 1/2 19 inch rack format. The user interface becomes optional as the unit can be totally controlled by PCs or PLCs.

### The perfect solution

The ASI 30 is the machine builder's choice for easy integration and interfacing. The ASI 30 is the end-users' choice, as it is the insurance of easy operation for accurate leak test results and optimized end-product quality. It is the perfect solution to a wide range of industrial applications requiring vacuum or sniffing leak test conditions:

- Automatic testing of airbag inflators and igniters, cooling radiators, heater cores, fuel tank system assemblies in the automotive industry
- Evaporators, compressors in refrigeration and air conditioning applications
- Packaging technology in the food industry
- Valves, fittings, manifold in the mechanical industry



Automotive



Refrigeration and  
air conditioning



Packaging industry



#### Advantages at a glance

- Easy integration
- Simple configuration
- Easy operation
- Small footprint
- Rugged design and maximized up-time
- Low maintenance requirements
- Interfacing to industrial standards
- Selectable I/O to meet any requirements
- Optional control panel
- 40 mbar gross leak cross over
- 4 mbar fine leak cross over

## Modular Helium Leak Detector. Extended Capabilities for Industrial Leak Detection Systems.

### Simple and easy

Extremely flexible and easy to integrate into helium leak detection systems the ASI 30 offers the highest performance in a rugged design for precise, repeatable results under all leak test conditions.

Specifically designed for ease of installation with just a 2 cables hookup (with adaptable lengths) between the vacuum module and the electronic module, components can be placed strategically to obtain the full leak detection benefits from the system.

### Dependable

Featuring a low maintenance high vacuum pump for high helium pumping speeds, dual independent iridium yttriated filaments and state of the art electronics the ASI 30 provides long lasting trouble free operation. For a maximum flexibility the leak detection system can be designed for testing in Normal, Gross or Sniffing test mode with the highest sensitivity level.

### Intelligent

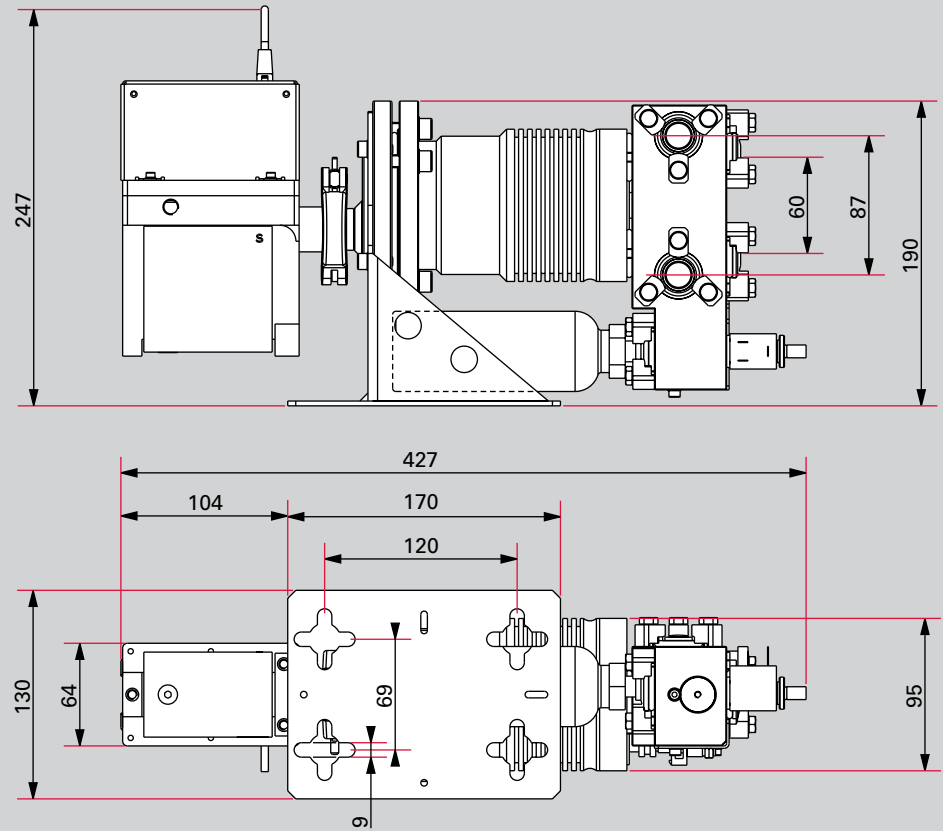
In order to be compatible with all industrial standards, the ASI 30 offers a complete range of interfaces including analog outputs, serial, digital inputs and outputs (relays and transistors), allowing data acquisition and complete external control of the system. The optional control panel provides easy operation through intuitive settings and software menus for both machine builders and end-users (dynamic status of the I/O during settings, restricted access to the menu through user's level).

### Advantages at a glance

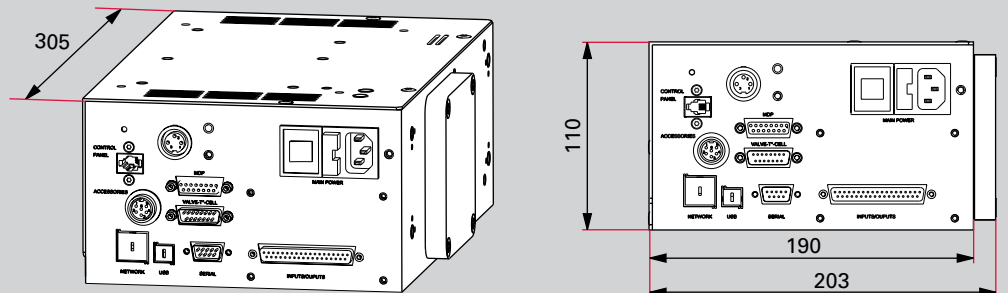
- Possibility to connect a buzzer on the control panel for audio alarm during maintenance or test cycles
- Pressure signal available on analog output
- Auto calibration function with temperature compensated built-in calibrated leak
- Dynamic calibration
- Auto zero function

## Dimensions

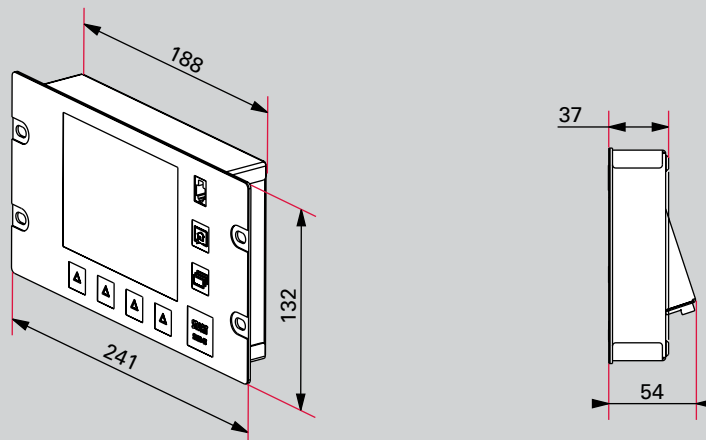
### Vacuum module



### Electronic module



### Control panel



Dimensions in mm

## Modular Helium Leak Detector. Extended Capabilities for Industrial Leak Detection Systems.

### Technical data

Modular Helium Leak Detector	ASI 30
Test methods	Vacuum and sniffing leak detection
Minimum detectable leak rate for He (vacuum leak detection)	5 · 10 <sup>-7</sup> mbar l/s (Gross leak test mode) 5 · 10 <sup>-12</sup> mbar l/s (Normal leak test mode)
Minimum detectable leak rate for He (sniffing leak detection)	5 · 10 <sup>-8</sup> mbar l/s
Tracer gases	<sup>4</sup> He, <sup>3</sup> He, H <sub>2</sub>
Maximum inlet test pressure	40 mbar (Gross leak test mode) 4 mbar (Normal leak test mode)
Start-up time	< 3 min
Response time (sniffing leak detection)	< 0,5 s
Vacuum connections	DN16 ISO-KF
Interface (see the order matrix for complete options configuration)	RS-232 Ethernet Profibus USB
I/O interface	Digital inputs Analog outputs Relay outputs Transistor (open collector) outputs
Dimensions: L × W × H	
Vacuum module:	427 × 130 × 247 mm (16,8 × 5,1 × 9,7 inches)
Electronic module:	190 × 305 × 110 mm (7,5 × 12 × 4,3 inches)
Control panel:	241 × 54 × 132 mm (9,5 × 2,1 × 5,2 inches)
Weight	
Vacuum module:	8,5 kg (18,7 lbs)
Electronic module:	4,5 kg (9,9 lbs)
Control panel:	1,3 kg (2,8 lbs)
Universal Voltage	90-240 V AC - 50/60 Hz
Maximum power consumption	150 VA
Operating temperature	5 – 40 °C

Industrial control panel and associated cable length	a
Without control panel	0
1,8 m	1
5 m	2
10 m	3

Cable length for electronic module	b
3,5 m	1
5 m	2
10 m	3
20 m	4

Sniffing option	c
With	S
Without	X

Interface board	d
Basic 15 pins I/O	0
Basic 15 pins I/O + Bluetooth	1
37 pins I/O	2
37 pins I/O + Wifi	3
37 pins I/O + Ethernet	4
37 pins I/O + Bluetooth	5
Profibus	6
Profibus + Bluetooth	7

**Order numbers accessories**

Accessories	Order number
<b>Primary pump</b>	
Special 2005 SD RVP pump with sniffing port at the interstage (Please see the order matrix of the Pascal series to complete the order number with motor type, voltage, cable set, and oil type according to your need)	<b>205Slxxxx</b>
<b>Sniffing option</b>	
Sniffing kit	<b>104757</b>
<b>Sniffing probe</b>	
Rigid 9 cm nozzle, 5 m tube length (Other nozzle and tube lengths upon request)	<b>SNC1E1T1</b>
<b>Specific communication interface</b>	
Extension interface kit (compatibility with Phoenix connectors)	<b>119428</b>

**Leading. Dependable.  
Customer Friendly.**

Pfeiffer Vacuum stands for innovative and custom vacuum solutions worldwide, for German engineering art, competent advice and reliable service.

Ever since the invention of the turbopump, we have been setting standards in our industry and this claim to leadership will continue to drive us in the future.

**Are you looking for a  
perfect vacuum solution?  
Please contact us:**

**Pfeiffer Vacuum GmbH**  
Headquarters · Germany  
T +49 6441 802-0  
info@pfeiffer-vacuum.de  
[www.pfeiffer-vacuum.com](http://www.pfeiffer-vacuum.com)

**adixen Vacuum Products**  
France  
T +33 (0) 4 50 65 77 77  
info@adixen.fr  
[www.adixen.com](http://www.adixen.com)

**Local address:**  
**Pfeiffer Vacuum XXX**  
Country  
T +xx xxxx xxxx  
info@pfeiffer-vacuum.de  
[www.pfeiffer-vacuum.com](http://www.pfeiffer-vacuum.com)